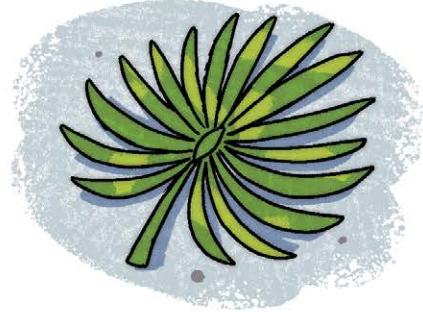
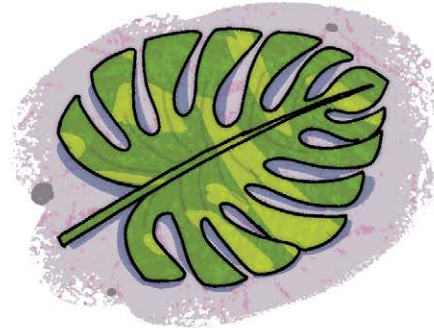
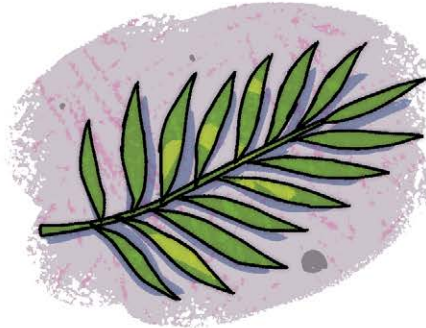
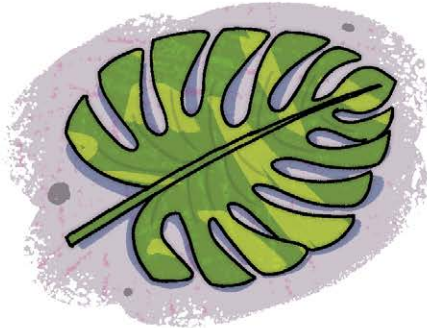
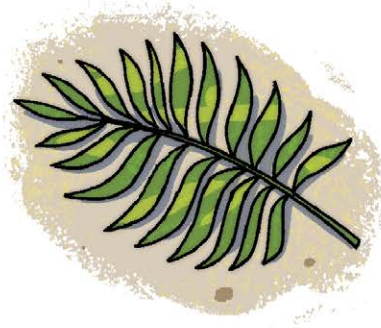
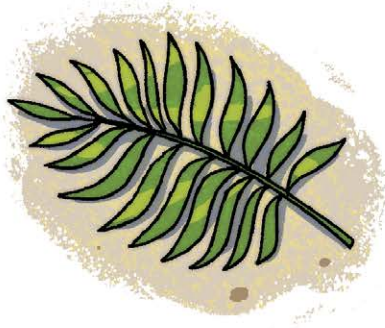


Cross Out What Is Different

INSTRUCTIONS: People put palm branches on the road for Jesus when He entered Jerusalem. Draw an X on the palm branch that is different in each row.



NAME:



Jesus' Triumphal Entry

Matthew 21; Mark 11;

Luke 19; John 12

STORY POINT:

People welcomed Jesus as their King.

CHRIST CONNECTION:

Jesus wanted the people to believe that He is the King and Savior of the world. God wants all people to turn away from their sin and trust in Jesus. Jesus forgives our sins and gives us life with God forever.

KEY PASSAGE PHRASE:

God loved the world and gave his one and only Son to everyone who believes in him. John 3:16

BIG PICTURE QUESTION:

Who is Jesus? Jesus is the Son of God who came to earth to save us.

Scan the QR code
for resources to
use at home!

